



Fosroc

Swimming Pool Solutions

www.fosroc.com



constructive solutions



constructive solutions

Company Profile

Fosroc is a world leader in the delivery of tailored Constructive Solutions for virtually any type of construction project, combining high quality products, expert technical support, customer service and innovation.

Fosroc's worldwide presence includes group companies in 25 countries with exports to over 70 countries.

Fosroc has over 85 years of world wide experience in supply of speciality chemicals and have gained the acknowledgment as "market leaders" in quality production and supply of the most comprehensive range of high performance construction chemicals serving the construction industries in building and civil structures above and below ground.

Fosroc's product range is as follows:-

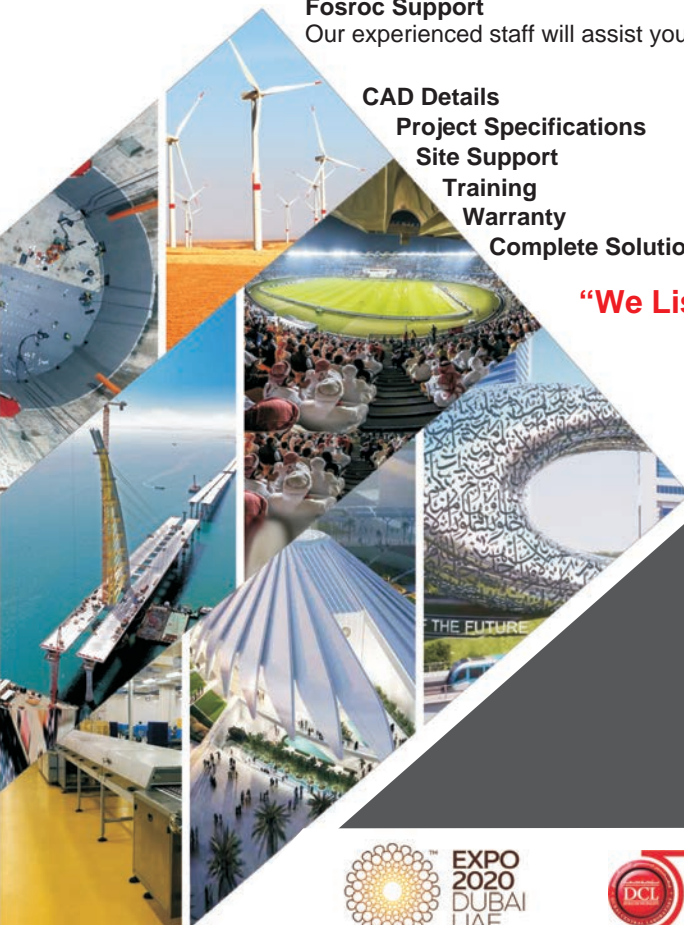
- Admixtures
- Adhesives
- Protective Coatings
- Concrete Repairs
- Industrial Flooring
- Grouts & Anchors
- Joint Sealants
- Surface Treatments
- Grinding Aids
- Waterproofing

Fosroc Support

Our experienced staff will assist you with high level support in:

- CAD Details
- Project Specifications
- Site Support
- Training
- Warranty
- Complete Solution Package

"We Listen"



Global
Efficiency
in delivering
Constructive
Solutions





FOSROC DELIVER SOLUTIONS NOT JUST PRODUCTS

CAD Details

A library of standard CAD details are available, bespoke CAD details can be created for your specific project

Project Specifications

Dedicated specification managers on hand to assist with correct system choices and tailored solutions

Site Support

Expert product and application support made available from our specialist teams.

Seminar & Training

Comprehensive programme of seminars and training courses designed to expand and reinforce your knowledge.

Leader in delivering
Constructive Solutions

Worldwide!

Fosroc Solution for Swimming Pools

Substrate - The concrete shall receive required repairs with the use of Fosroc **Renderoc** Range to ensure the concrete's integrity prior to the application of the following layers.

Waterproofing - **Nitocote CM210** a Polymer Modified Cementitious waterproofing coating that is used at 1-2 mm thickness to protect the substrate from positive and negative water pressure.

Separation Layer - The use of Polyethylene sheets is applied to protect the waterproofing from the following layers.

Protection Screed - **Cemtop SC-70** is applied at thicknesses between 40-70 mm to provide the waterproofing protection whilst providing the benefit of used to create the desired slope.

Tile Adhesive - **Nitotile XS** is a polymer modified cementitious waterproof tile adhesive
Tile - Fixing the desired tiles on top of Nitotile XS.

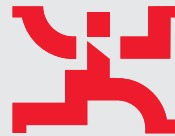
Tile Grout - **Nitotile XS Grout** is to be mixed and used for the filling of the void that is found between the tiles to ensure a watertight system.

Polymer Modified Plaster - **Nitobond SBR** a Polymer bonding aid is to be added to the plaster mix for improving the physical properties of cementitious mixes.

Reinforcing Fibers - **Nitoproof Scrim** is a Reinforcing fiber that is embedded within the Nitocote CM210 for the reduction of stress in the waterproofing system at the corners.

Sealant - **Nitoseal SC600** is a special develop highly chemical resistant, fast cure, durable, one-component joint sealant for pools & chloride water.

FOSROC



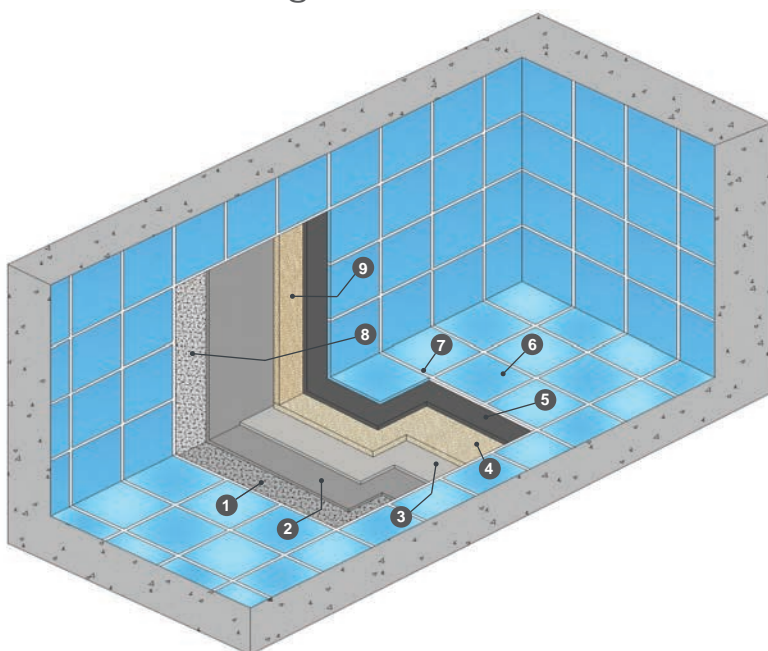
constructive solutions

Fosroc is a world leader in the delivery of tailored Constructive Solutions for virtually any type of construction project, combining high quality products, expert technical support, customer service and innovation.

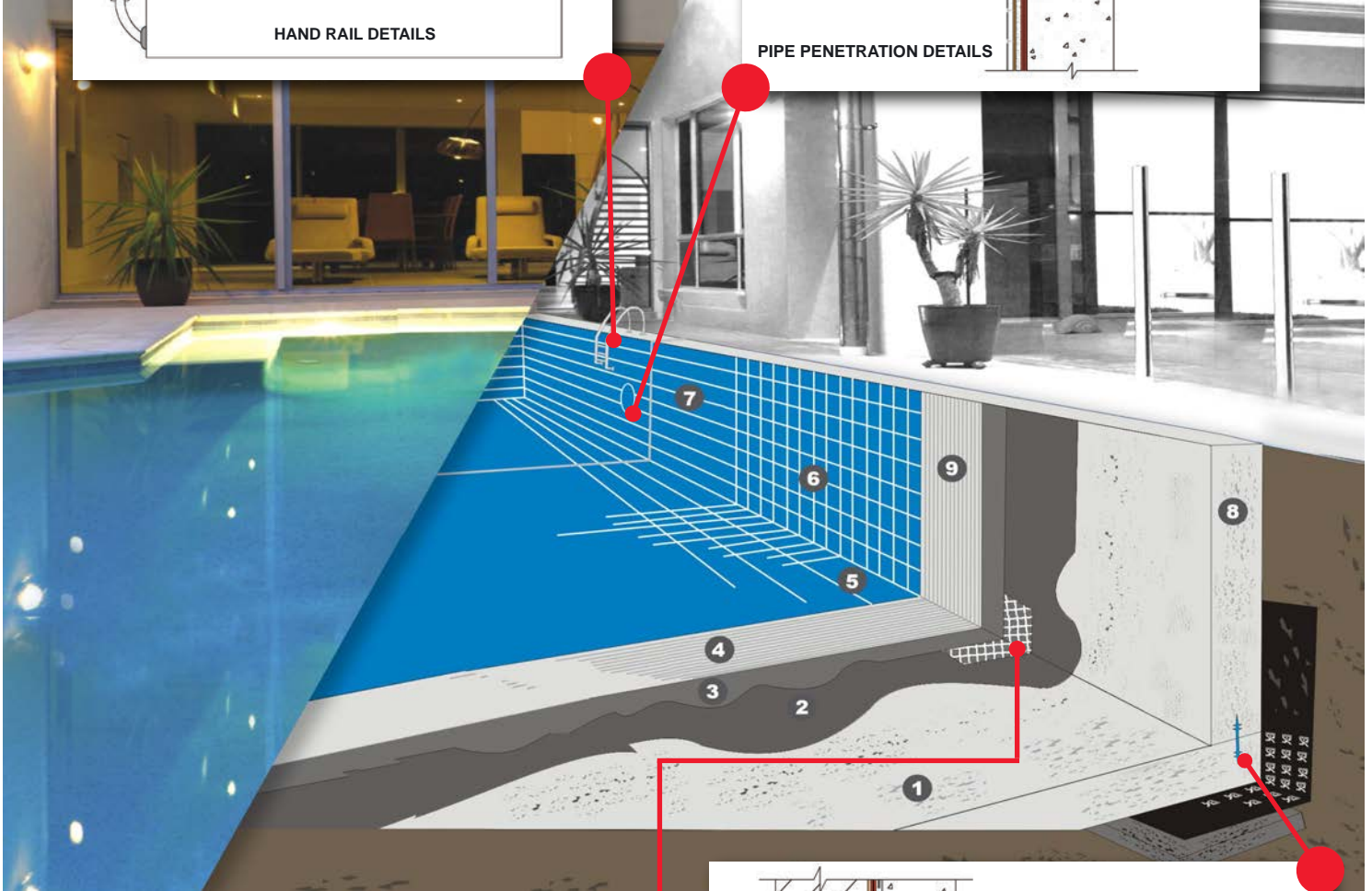
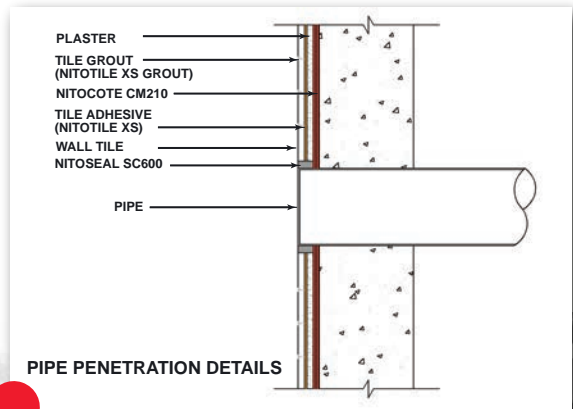
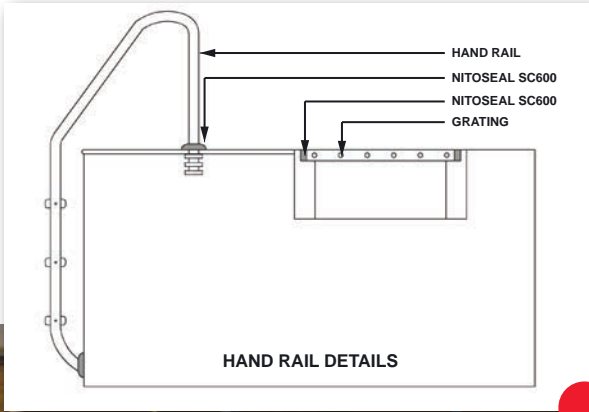
Fosroc worldwide presence includes group companies in 19 countries with exports to over 70 countries.

Fosroc has over 85 years of world wide experience in supply of speciality chemicals and have gained the acknowledgment as market leaders in quality production and supply of the most comprehensive range of high performance construction chemicals serving the construction industries in building and civil structures above and below ground.

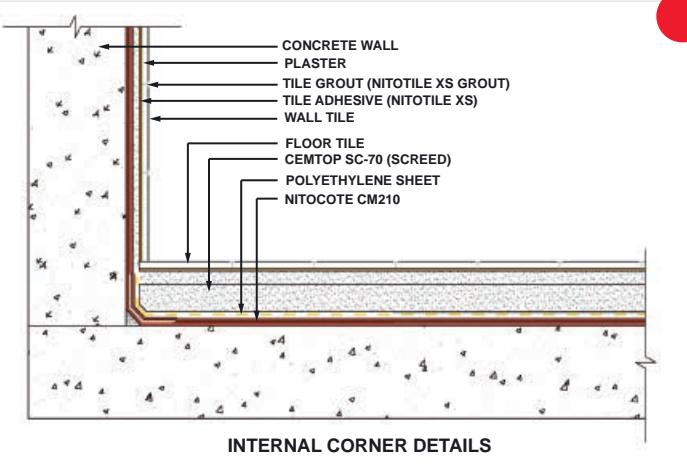
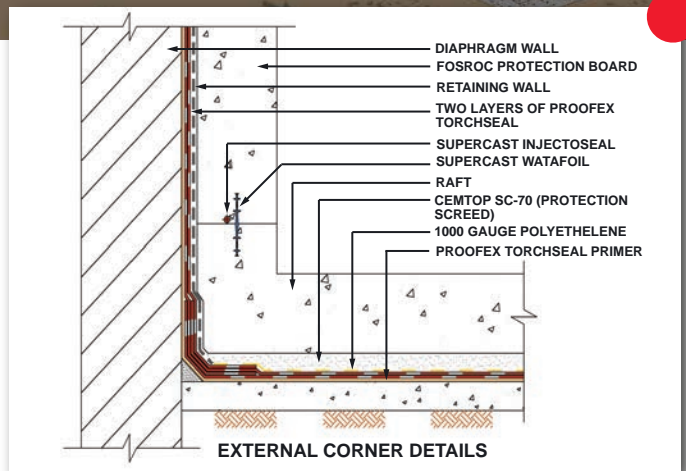
Isometric 3D Image



- 1 Floor Slab
- 2 Nitocote CM210
- 3 Polyethylene Sheet
- 4 Cemtop SC70 (Screed)
- 5 Nitotile XS
- 6 Tile
- 7 Nitotile XS Grout
- 8 Wall
- 9 Polymer Modified Cement Plaster



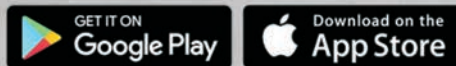
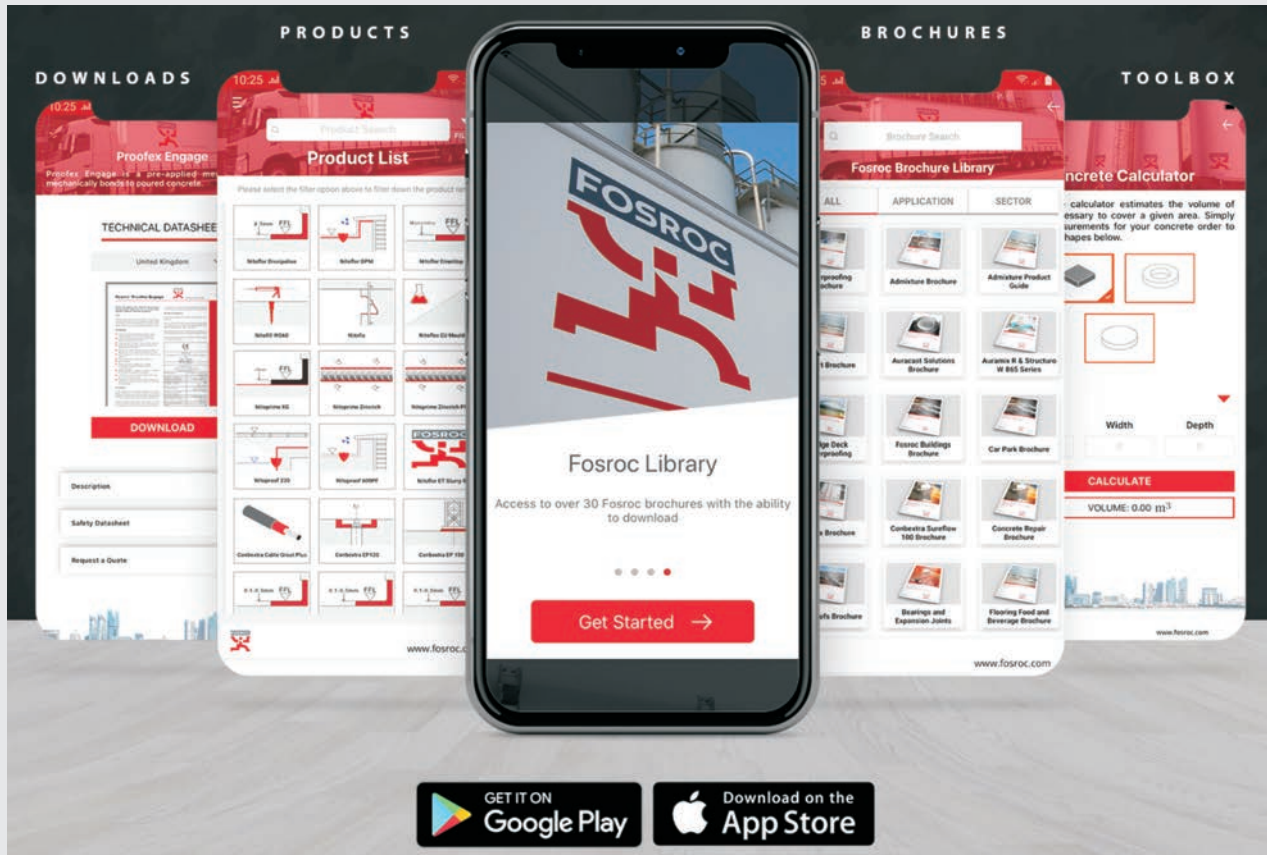
- 1 Floor Slab
- 2 Nitocote CM210
- 3 Polyethylene Sheet
- 4 Cemtop SC70 (Screed)
- 5 Nitotile XS
- 6 Tile
- 7 Nitotile XS Grout
- 8 Wall
- 9 Polymer Modified Cement Plaster



Fosroc offers a full range of construction chemical solutions, helping to protect structures throughout the world. Please refer to our online brochure library:

www.fosroc.com

Download the NEW Mobile App.



Factory & Main Office

Al Gurg Fosroc Co. LLC
 P O Box 657, Dubai, U.A.E.
 215 Community, Street No.13, Nad Al Hamar Road
 Al Ramool Industrial Area, Rashidiya.
 Tel : +971 4 203 9699, Fax : +971 4 285 9649
 email : agf@fosroc.com

Branches

Abu Dhabi - Office
 Al Gurg Fosroc Co. LLC
 P.O. Box 27917, Abu Dhabi, U.A.E.
 Abu Dhabi, Airport Street, Corniche Road
 Union National Bank Building, Flat No:†1603.
 Tel: +971 2 6731779 Fax: +971 2 6731449

Jebel Ali
 Al Gurg Fosroc Co. LLC
 Plot No 599-1079, Expo Street, Industrial Area 1
 Jebel Ali, U.A.E.
 Tel : +971 4 870 9444
 email : agf@fosroc.com

Abu Dhabi - Warehouse
 Warehouse No D202, Plot No 29. ICAD III.

Distributors

Bahrain

YBA Kanoo
 P O Box 45, Bahrain.
 Tel : 177 38200
 Fax : 177 32828
 email : bahrain@fosroc.com

Oman

Al Amana Building Materials
 P O Box 1429, Ruwi, Post Code 112, Oman.
 Tel : 2481 5080
 Fax : 2481 7554
 email : oman@fosroc.com

Kuwait

Boodai
 P O Box 42371, Shuwaikh, Kuwait.
 Tel : 248 17618, 248 17848
 Fax : 248 32124
 email : kuwait@fosroc.com

www.fosroc.com

Important Note

Fosroc products are guaranteed against defective materials and manufacture and are sold subject to its standard terms and conditions of sale, copies of which may be obtained on request. Whilst Fosroc endeavours to ensure that any advice, recommendation, specification or information it may give is accurate and correct, it cannot, because it has no direct or continuous control over where or how its products are applied, accept any liability either directly or indirectly arising from the use of its products, whether or not in accordance with any advice, specification, recommendation or information given by it.



constructive solutions