

Concrete Admixtures for Durable & Sustainable Construction



www.bergerfosroc.com



constructive solutions

Our Profile

Berger Fosroc Limited, Bangladesh is a new joint venture entity formed between Berger Paints Bangladesh Limited and Fosroc International Limited on 31st January 2018.

Berger is one of the renowned names in the paint industry and the country's major specialty paint business with products and ingredients dating back more than 250 years. Over the decades, Berger has evolved to become the leading paint solutions provider in Bangladesh and has diversified into every sphere of the industry- from Decorative Paints to Industrial, Marine and Powder Coatings.

Fosroc International is the flagship company of the JMH Group which over the years has emerged as a leading supplier of construction products and solutions across the world. Fosroc world-wide backed by its rich history of over 75 plus years of international presence has operating companies spread across Europe, Middle East, India and Asia besides other emerging geographies, with over 20 manufacturing locations and distribution network in over 100 countries worldwide.

Berger Fosroc Limited in Bangladesh will provide complete solutions to all sectors of the construction industry, specializing in solutions for the construction of buildings, industrial facilities, power plants and to all types of transportation and civil infrastructure.

This new entity will be supported by the parent companies Group Research & Development facilities located in various International locations with state of the art laboratories and a team of dedicated Scientists pioneering product development and innovation.

Berger Fosroc's wide range of constructive solutions portfolio includes

- Cement Grinding Aids such as Cemax, Auracem
- Admixture products such as Conplast, Structuro, Auramix, Auracast
- Waterproofing products such as Supercast, Nitoproof, Proofex
- Precision Grouts & Anchors such as Conbextra, Cebex, Lokfix
- Joint Sealants such as Thioflex, Nitoseal
- Flooring products such as Nitoflor, Cemtop, Adhesives
- Concrete Repair & Protection such as Renderoc, Nitomortar, Nitocote, Dekguard.

Product Range



Admixtures and Surface Treatments



Grouts and Anchors



Industrial Flooring



Concrete Repair

Support for Durable and Sustainable Construction

The Berger Fosroc Research and Development team has been mandated to develop solutions that aid the construction industry in achieving higher quality standards. Towards this end, it has been providing a range of products that enhance the workability and durability of concrete.

Our experience and leadership in concrete admixtures have resulted in greater convenience for the construction industry and superior concrete structures.

Our 'Concrete Team' takes up the responsibility of interacting and providing customized solutions, based on the specific requirements of individual building and infrastructure projects, utilizing the expertise and experience it has gained over the years.

Berger Fosroc is an ISO 9001:2000 certified company and maintains the highest standards in product and service quality to ensure that Indian construction rises up to the best in the world.

Berger Fosroc Solution for Improved Results

Berger Fosroc constantly strives to enhance the desirable properties of concrete, such as workability, retention and compressive strength in the wet and hardened stages. To complement the conventional 'Conplast' admixture range, it has introduced the 'Auramix' and 'Auracast' range of new-generation admixtures, based on advanced Polycarboxylic Ether technology.

The 'Auramix' and 'Auracast' product range incorporate water-dispersible comb-polymers with a more complex molecular structure than conventional superplasticizers. The two most important mechanisms involved in dispersal in polycarboxylate systems are polymer adsorption and steric hindrance caused by the thickness of the adsorbed polymer layer and electrostatic repulsion through induced electrical charge.



Product Range



Structural Strengthening



Waterproofing



Joint Sealants and Adhesives



Cement Additives

Index

■ Pumpable Concrete	5
■ Rheological Concrete for Building Segment	6
■ Ready Concrete Mix and Captive Batching Plant Concrete	8
■ Self Compacting Concrete	10
■ Speeding Progress with Spray Concrete	12
■ Moving Ahead with Pavement Quality Concrete	13
■ Roller Compacted Concrete	14
■ Waterproof Concrete	15
■ Precast Concrete	16
■ Service	17
■ Product Selection Chart	18



Pumpable Concrete

The requirement in any type of construction is that concrete should exhibit cohesiveness and the ability to be pumped, irrespective of size of the building.

General purpose, high range water-reducing and retarding admixtures are suitable for obtaining moderate workability retention in concrete containing natural or manufactured sand.

Concrete cohesion is improved due to dispersion of cement particles, thus minimizing segregation and improving surface finish.

Factors governing the pumpability of concrete

- Type of cement and its source
- Admixture compatibility with cement
- Water-cement ratio and grade of concrete
- Vibration during placing

Berger Fosroc offers wide range of configuration under Conplast SP430 Range / Auramix 200 Range

It is a Sulphonated Naphthalene, polymer-based concrete admixture specially formulated for 25% water reducing capability, resulting in concrete that is pumpable, cohesive and displays moderate workability retention.

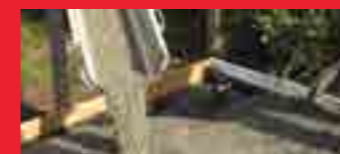
- Workable concrete requiring little vibration during placing
- Easier, quicker placing and compaction.
- Denser, close textured concrete with reduced porosity and hence more durable
- Risk of segregation and bleeding minimized; which aids pumping of concrete
- Safe in pre stressed concrete and with sulphate resisting cement and marine aggregates

Complies with ASTM C 494 Type F and G depending on dosage.

In addition, PCE based admixture **Auramix 300** also used to produce pumpable concrete where water reducing capability require more than 25%.



Applications



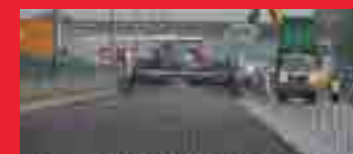
Ready Mix



Rail Bridge



Raft Foundation



Concrete Road

Rheological Concrete for Building Segment

Concrete specification for residential and non-residential (Commercial and Institution) buildings may vary depending on its size and facilities provided. Grade of concrete and wet properties will be defined in association with water cement ratio to obtain designed strength and durable concrete.

Our continuous development process has been designed to suit new construction methods and accommodate daily variation in concrete ingredients. Depending on wet properties requirement such as slump retention and strength, SNF and PCE based admixtures have been developed to suit both natural and manufactured sand.

Berger Fosroc offers SNF based Admixture

Berger Fosroc offer Conplast SP430 product range for wide range of concrete grade ranging from M15 and M40, which exhibits rheological concrete to pump to greater heights without altering designed water cement ratio.

Advantages

- High water reducing capability, hence suitable for low water-cement ratio
- Increased workability level to pump concrete for greater heights
- Improved cohesion and eliminates bleeding and segregation
- Complies with ASTM C 494 Type F and G depending on dosage
- Normal dosage ranges from 0.6 to 1.5% by weight of cement
- Highly suitable for raft foundation and slabs

Berger Fosroc offers PCE based Admixture

In general load carrying members such as columns and beams are designed with higher grade of concrete ranging from M40 and above.

Berger Fosroc offers Auramix 400 or Structuro Series product range to fulfill all the requirements of wet and dry properties of concrete having very low water cement ratio.



Advantages

- Increased slump retention capability and controls the heat of hydration
- Yields high ultimate strength
- Improved adhesion to reinforcing and prestressing steel
- Lower permeability and better resistance to carbonation
- Reduced shrinkage and creep
- Increased durability
- Complies with ASTM C 494 Type F and G depending on dosage
- Normal dosage ranges from 0.3 to 2.0% by weight of cement
- Compatibility with 100% crushed sand / manufactured sand / blended cement

Applications

- Residential complex having many tower in compounded community
- Public buildings such as hospitals, schools and hotels
- Medium size industrial and commercial buildings
- Individual residence building or villa



Applications



Hospital Buildings



Tech Parks



Residential Towers



Commercial Buildings

Ready Mix Concrete and Captive Batching Plant Concrete

The most important requirement in Ready Mix Concrete is long workability retention without compromising on water-cement ratio and the properties of the hardened concrete. Also, industry demands a robust single admixture that is suitable for both Normal Slump Concrete (NC) and Free Flow Concrete (FFC), with long workability retention of not less than 4 hours. "Free flow concrete" can be classified as flow concrete for M35 and lower grade of concrete which are required for shear walls and structural elements having congested reinforcement.

The factors influencing workability retention:

- Type of cement and its content in concrete
- Water-cement ratio
- Grade of concrete
- Type of admixture
- Concrete temperature

Berger Fosroc offers Auramix 200 & Auramix 201 for Normal concrete & Auramix 300 Plus for flow concrete

A state-of-the-art product developed to fulfill the need for concrete with long workability retention of 4 hours plus. The product exhibits high water reducing capability for a given concrete mix design and requires only dosage optimization at site.

- Suitable for high volume replacement of GGBFS or fly ash in concrete mix
- To produce free flow concrete for M35 and lower grade of concrete
- Workability retention of more than 4 hours can be achieved
- Compressive strength - 30% of the characteristic strength in 24 hours
- Single admixture for normal and free flow concrete

Complies with ASTM C 494 Type F and G depending on dosage.



Advantages

- Compatible with a wide range of cement brands
- Suitable for all types of cement replacement such as fly ash, GGBFS and microsilica
- Single admixture for all grades of concrete irrespective of type of workability
- Presence of built-in VMA, providing improved resistance to bleeding and segregation
- Reduced shrinkage
- Increased durability
- Eliminate stickiness in concrete due to presence of high volume of fines or clay

Applications

Berger Fosroc technology for long workability concrete goes a long way in supporting construction activity across the infrastructure and high-rise building segments.

- Highly suitable for Ready Mix Concrete Industry due to long workability retention
- All infrastructure construction such as metros, road & railway bridges and power plants
- High-rise residential or commercial structures
- Shear wall constructions



Applications



Bridges



High-rise Buildings



Metro Construction



Shear Wall Construction

Self Compacting Concrete

Self Compacting Concrete (SCC) is a flowing concrete mixture is able to consolidate under its own weight. Suitable for placing concrete in difficult condition and in section with congested reinforcement.

A concrete mix can only be classified as Self Compacting Concrete if the requirements for filling ability, passing ability and segregation resistance are fulfilled.

- Easier placing
- Improved durability
- Faster construction
- Suitable for thin concrete sections
- Better surface finish
- Used for precast and cast-in-situ concreting

Berger Fosroc offers Auramix 450 to fulfil the requirement of Self Compacting Concrete.

Low viscosity high performance polycarboxylic technology based chemical admixture.

- Able to flow under its own weight and completely fill the formwork
- Improved adhesion to reinforcing and prestressing steel
- Moves effortlessly without vibrator
- Complies with ASTM C 494 Type F and G depending on dosage
- Long workability retention
- Segregation resistance
- High strength

Auramix 450 should be used with viscosity modifying agent Auramix V200



SN	METHOD	PROPERTY	TYPICAL VALUE*
1	Slump-flow by Abrams cone	Filling Ability	725mm
2	T50cm slump flow	Filling Ability	4 sec
3	J - Ring	Passing Ability	5mm
4	V-Funnel	Filling Ability	8 Sec
5	V-funnel at T5minutes	Segregation Resistance	+ 3
6	L - Box	Passing Ability	0.9
7	U – Box	Passing Ability	20mm
8	Fill Box	Passing Ability	94%

* For a particular Concrete mix design

Applications



Flow Concrete

Congested Reinforcement

Wall Construction

Highrise Buildings

Advantages

- Bleeding and segregation resistance with built-in VMA
- Compatible with a wide range of cement brands
- Ideal for congested reinforcement concreting
- Suitable for temperature control concrete
- Accommodates cement replacement in concrete mix
- Reduces labour and equipment requirements
- Increases durability

Applications

Self Compacting Concrete is highly suitable for concreting subjected to congested reinforcement and where the possibility of using vibrators for compacting concrete is limited.

- Residential or commercial high-rise towers
- Multi-tower complexes
- Suitable for thin section concreting
- Architectural elements having intricate formwork
- Where concrete requires limited finishing after de-shuttering



Speeding Progress with Spray Concrete

The New Austrian Tunnel Method (NATM) is to use the geological stress of the surrounding mass to stabilize the tunnel itself. The excavation is immediately protected by a layer of spray concrete (wet) with accelerators that enable quick setting properties, to provide an Initial Setting Time (IST) as low as 5 minutes. Other support includes steel arches, rock bolts and mesh.

Berger Fosroc offers Sprayset HBLM an alkali-free shotcrete admixture that provides set acceleration and less rebound loss.

Advantages

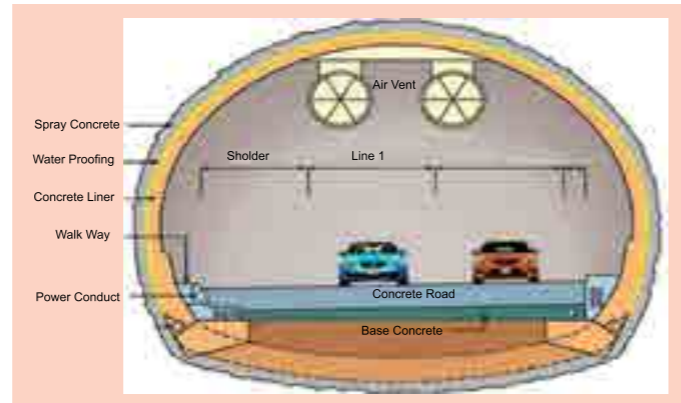
- Can be applied up to 300mm in one application to vertical surfaces and up to 200mm overhead, depending on weight / volume of aggregate
- Non-caustic nature for safer handling / operating conditions
- Meets requirement of ACI 506 – 56
- Chloride-free admixture

Tunnel Lining

After tunnel formed by drilling or blasting and spray concreted, the newly formed tunnel surface has to be lined with concrete (M40 grade) lining, using Auramix range, to further strengthen the sprayed concrete.

Applications

- Road and rail tunnel construction
- Irrigation tunnels
- Hydroelectric power plants
- Concrete spray on embarkment



Moving Ahead with Pavement Quality Concrete

Pavement quality concrete, used for road-laying requires compaction of a very specific concrete design at a consistency level that allows the form to move continuously. It is essential that the concrete is able to support itself in the shape moulded and hence concrete for pavement quality applications tends to be of very low consistency (slump) level. The grade of PQC will be decided by various traffic studies, need for trouble-free service life and the modulus of sub-grade reaction, etc. The flexural strength of concrete is first fixed and then the thickness of pavements.

Berger Fosroc offers Conplast SP430 ITPQ/ Auramix 350 PQC Range is an exclusively designed for pavement quality concrete.

Advantages

- Improved workability - Easier, quicker placing and compaction
- Improved quality - Denser, close textured concrete with reduced porosity and hence more durable
- Higher cohesion - Risk of segregation and bleeding minimized; thus aids pumping of concrete
- Chloride-free - Safe in prestressed concrete and with sulphate resisting cement and marine aggregates

Applications

All types of concrete road laying using paver machine.

Complies with ASTM C 494 Type F and G depending on dosage.



Applications



Tunnel Lining



Tunnel Spray Concrete



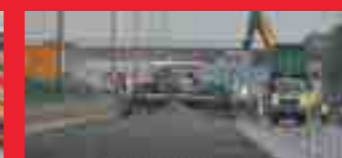
Railway Tunnel



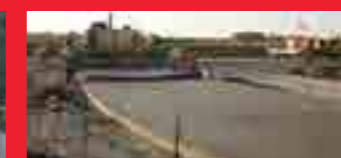
Concrete Spray on Embankment



Road Construction



Road Construction



Road Construction



Road Construction

Roller Compacted Concrete

The development of roller compacted concrete caused a major shift in the construction practice of massive concrete dams and locks. Properties of hardened RCC can be similar to those of conventionally placed concrete.

For effective consolidation, the concrete must be dry enough to prevent sinking of vibratory roller equipment, but wet enough to permit adequate distribution of the binder mortar throughout the material during the mixing, placing and vibratory compaction.

Berger Fosroc offers Conplast R water-reducing and retarding admixture has proven to be beneficial for extending workability of RCC and increasing the initial and final times of setting.

Conplast AEA

In association with Conplast R, air entraining agent Conplast AEA shall be used to produce air entrained concrete for increase durability and resistance to entrained by frost and decaying salts. Conplast AEA also improve cohesion and workability of concrete eliminating bleeding and segregation.

Advantages

- Reduced cement consumption
- Pipe cooling not required because of low temperature rise
- Extended workability during hot weather conditions

Applications

- Irrigation dam construction
- Hydroelectric stations

Complies with ASTM C 260.



Waterproof Concrete

Concrete becomes saturated when a water body comes in contact with it and water flows slowly under pressure due to interconnecting capillaries. The Integral system works with the matrix of concrete or mortar, giving the concrete itself a waterproof quality.

Berger Fosroc offers Conplast Crystalline is an integral waterproofing admixture based on crystalline formation to produce water tight concrete. Crystalline chemicals react with water in concrete to form crystals structure in the tiny capillaries.

Advantages

- Crack filling ability up to 0.5mm width
- Reduces shrinkage and creep
- Exhibits 50% better resistance over control concrete at 10 bar pressure
- Compatible with all cement including prozzolanitic cement
- Increase durability of concrete

Applications:

- All types of Concrete foundation below ground
- Water Reservoir
- Tunnel concreting
- Retaining walls and subways
- Water tanks and swimming pools
- Precast unit

Berger Fosroc offers Conplast WL (formerly Known as Mr. Expert Cement Mix) is an integral waterproofing admixture based on a hydrophobic system that makes use of fatty acids to block pores within the concrete structure to prevent water from passing.

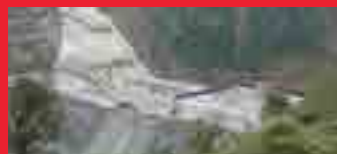
- **Liquid admixture:** Instant and complete dispersion throughout the mix. Uniform waterproofing throughout concrete matrix
- **High efficiency:** Reduction in permeability of concrete/ mortar
- **Improved workability:** Improves compaction of concrete and mortar, even where harsh sands or aggregates are used
- **Improved concrete quality:** Minimizes porosity and honey-combing to produce dense concrete

Applications

- Roof slab concrete
- Basement concrete
- Screed and plasters
- Concrete water tanks, sumps and drains



Applications



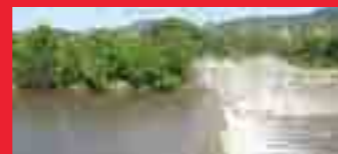
Irrigation Dam



Irrigation Dam



Hydel Dam



Irrigation Dam



Water Tank



Screed & Plaster



Roof Slabs



Basement

Precast Concrete

Precast concrete is a construction product resulting from casting concrete in a reusable mould or “form” which is then cured in a controlled environment. The precast products are then transported to the construction site and lifted into place. In contrast, standard concrete is poured into site specific forms and cured on site.

Governing factors in precast concrete

- Low water-cement ratio
- Medium workability
- Need for high early strength for early de-moulding to increase productivity
- Compatibility with cement replacements
- Compatibility with 100% crushed sand / manufactured sand

Berger Fosroc offers Auracast product range to suit current requirements

Auracast 50 / Auracast 100 is a low-viscosity, single component PCE based admixture for low slump concrete that enables obtaining 50% of the characteristic strength in 24 hours. This makes it an ideal admixture for precast segments such as underground metro rings and precast walls and slabs for buildings.

Auracast 270M is a low-viscosity, single component PCE-based admixture for normal slump concrete with slump retention and enables obtaining 50% of the characteristic strength in 24 hours. This makes it ideal for large volume of concreting in precast industries.

Auracast 405 is a low-viscosity, single component PCE-based admixture for flow concrete with slump retention. It enables obtaining 50% of the characteristic strength in 24 hours. This makes it an ideal choice for concrete poured in structures having congested reinforcement.

All Product complies with ASTM C 494 Type F.



Service

Concrete Laboratory:

- Concrete laboratory facility established in strategic regions
- Expertise of concrete technologist, chemist and formulators for product development and testing
- Laboratory equipped with all testing equipment
- Product demonstration and training for customers
- Confirmatory concrete trials in presence of Clients and Consultants
- Trouble shooting & product modifications

Packing

- Berger Fosroc admixture are supplied in 200kg, 250kg and Bulk
- Conplast WL packed in 125 ml pouch, 1 litre, 5 litre, 20 litre and 100 litre container. Also packed in 1000 litre bulk
- Conplast Crystalline packed on 30kg bags

Logistics

- Shipment in barrel & IBC in accordance with customer requirement



Applications



High Early Strength Concrete



Precast Element for Building



Metro Segment



Precast Element

Applications



Laboratory Equipment



Concrete Lab



Barrel



IBC - 1000 litre pack

Product Selection Chart

Product Selection Chart																									
Name of the Products	Normal Plasticizer M20 grade Concrete	Normal Plasticizer with Retarder M20 Grade	M25 to M40 Slump Retention Concrete	M25 to M40 grade Flow Concrete with Retention	M40 to M50 Grade Slump Retention Concrete	M40 to M50 grade SCC / Flow Concrete with retention	Grade M60 and Above Slump retention Concrete	Grade M60 and above SCC / Flow Concrete	Accelerator for Normal Concrete	Accelerator for Spray Concrete	Non Caustic Powder Accelerator	Silicate based Chloride free Accelerator	Foaming agent to Produce Light Weight Concrete	Under Water Admixture	Surface Retarder	Solid Block Admixture	Air Entraining Agent	Plasticizing and Air Entraining	Waterproofing Admixture	Roller Compacted Concrete Admixture	PQC Concrete	High Early Strength Concrete with Normal Slump	High Strength Concrete - SCC with Retention	Precast Concrete-with Retention	Mortar Plaster
Normal Plasticizer																									
Conplast P211	■																								
Conplast P505	■																								
Conplast PA21S																		■							
Conplast R																				■					
Conplast RP264		■																							
Super Plasticizer - SNF based																									
Conplast SP430	■		■																						
Conplast SP430 G8		■	■																						
Conplast SP430 ES2		■	■																						
Conplast SP430 SRV		■	■																						
Conplast SP500KL		■																							
Conplast SP600					■																				
Conplast SP430 KRM6		■	■																						
Conplast SP430 ITPQ																					■				
Super Plasticizer - PCE based Admixture																									
Auramix 400				■	■	■	■	■																	
Auramix 350			■																						
Auramix 300			■		■	■																			
Auramix 300 Plus			■	■		■																			
Auramix 200		■	■																						
Auracast 100																						■			
Auracast 270M																						■		■	
Auracast 405																						■		■	
Concrete Accelerator																									
Conplast NC									■																
Sprayset HBL										■															
Sprayset SL											■														
Conplast UW														■											
Sprayset HBP											■														
Mortar Plasticizer																									
Cebex 112																									■
Block Admixture																									
Conplast SD110																									■
Waterproofing Admixture																									
Conplast WL (formerly known as Mr. Expert Cement Mix)																									■
Conplast crystalline																									■
Air Entraining Agent																									
Conplast AEA																									■
Light Weight Concrete																									
Conplast F297																									■
Surface Retarder																									
Conplast SR																									■



Leaders in constructive solutions

Important note :

Berger Fosroc products are guaranteed against defective materials and manufacture and are sold subject to its standard terms and conditions of sale, copies of which may be obtained on request. Whilst Berger Fosroc endeavours to ensure that any advice, recommendation specification or information it may give is accurate and correct, it cannot, because it has no direct or continuous control over where or how its products are applied, accept any liability either directly or indirectly arising from the use of its products whether or not in accordance with any advice, specification, recommendation or information given by it.



Berger Fosroc Limited

Corporate Address:

'Berger House', House # 08, Road # 02, Sector # 03, Uttara Model Town, Dhaka 1230, Bangladesh.

telephone(Hunting) : +880248953665, **fax** : +880248951350,

e-mail : enquiry.bangladesh@bergerfosroc.com, **website** : www.bergerfosroc.com

